



# **BRICK** ZARCHITECTURE

From the  
Brick Industry  
Association

## The 2022 Brick in Architecture **AWARD WINNERS**

**COMMERCIAL** ♦ **EDUCATIONAL** (Higher Education/K-12) ♦ **HISTORIC RENOVATION** ♦ **INTERNATIONAL**  
**PAVING & LANDSCAPING** ♦ **RESIDENTIAL** (Multi-Family/Single-Family) ♦ **THIN BRICK**

Since 1989, the Brick in Architecture Awards have been one of the most prestigious national architectural award programs featuring clay brick. Architecture firms from around the world enter their best projects to be judged by a jury of their peers.

This year, a diverse panel of architects independently reviewed and scored each of the entries. Based on the technical and creative use of brick in meeting the aesthetic and functional design challenges, the Brick Industry Association is pleased to showcase the following projects, which were chosen as the Best in Class in their respective categories.

## Treehuis

Marion County, Iowa

You do not enter Treehuis, a 7,000-square-foot corporate retreat, as much as you walk upon it. Nor can you see the pond—the structure’s focal point—from the main access point; rather, the water reveals itself only upon entry.

Through the masterful use of siting, the design team carefully integrated Treehuis into the sloping landscape. It sits “in the hill” rather than “on the hill.” And the result is a wonderful surprise of water, nature, and treelines.

Conceived by the design team as a meeting place and respite for multi-generational family owners of a major manufacturing company in southeast Iowa, the building includes a multifunctional dining space, lounge and breakout spaces, exterior decks with fire pits, and a dock stretching out over the pond.

The building consists of two brick masses that frame a glazed volume. The earthen brick walls harmonize with the surrounding tones of the site, providing durability, thermal mass, and fire resistance. Treehuis has two entrances: one is dramatic, crowned with a green roof, and the other is more functional, with a pathway that leads from the parking area that crosses a bridge, moving into the



building between two masonry masses, and into the communal dining space.

The interior spaces take advantage of framed views out to the pond and beyond. The exterior glazing is consolidated and focused to enhance this effect. During the day, the result is a series of warm, daylit spaces connected to their setting. In the evening, the building becomes a lantern, welcoming the family back for food and fellowship.

Treehuis demonstrates how brick can shape the siting, massing, and detailing of a building. It offers a place for family members to gather annually, conduct business, and create memories in a beautiful and sustainable setting. ■



**Architect:**

substance

**Brick Manufacturers:**

Glen-Gery & Sioux City Brick

**Mason Contractor:**

Seedorff Masonry, Inc.

**Photographer:**

Corey Gaffer

Credits appear as submitted in entry form

## Memorial to the Enslaved

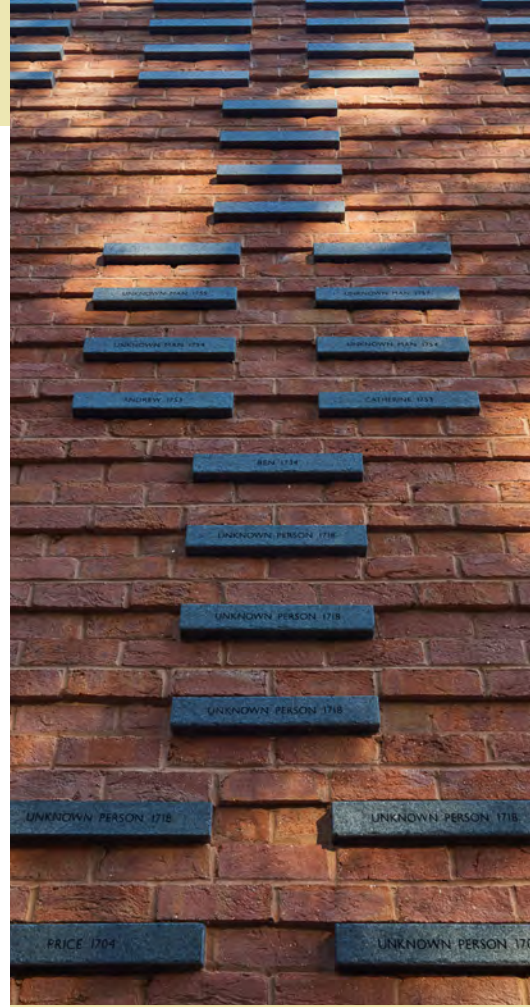
Williamsburg, Virginia

An unknown number of enslaved people built, operated, and maintained the historic William & Mary campus. To commemorate and honor those enslaved, the university commissioned an international design competition to create “a noble and lasting tribute to the memory of the people who built and served the university.” The winning design went to artist and alumnus Will Sendor ‘11. His concept, Hearth: Memorial to the Enslaved, evokes a brick fireplace, a symbol of both community and the center of domestic enslavement.

Rising 20 feet tall, the brick structure gives a sense of permanence and gravitas. The memorial’s red range bricks pay homage to those found across the university’s historic

campus. Yet, as a material, brick plays a larger role in this story. During unrelated construction in 2019, the university uncovered an early 18th-century vaulted brick drain. Dating from 1705, the drain would have been constructed with bricks made by the enslaved men, women, and children at William & Mary. Six historical bricks from the drain are prominently featured at the base of the memorial. In addition, a black-and-dark-brown brick “spine” within the red-brick outer structure symbolizes the part of the hearth forever changed by the flames of enslavement.

The memorial also incorporates 198 engraved, solid-black granite blocks that “identify” the currently named, known, and unknown individuals enslaved by the university, with an additional 400+ unengraved stones to be marked as names are uncovered with further research and study. The pattern created by the purposeful mixing of the granite and the brick together is inspired by cloth and art patterns of western Africa as a small way of restoring some generational identity to the souls memorialized. ■



### Architect:

Baskervill

### Brick Manufacturers:

Pine Hall Brick Company & Old Carolina Brick Co.

### Brick Distributor:

Riverside Brick & Supply

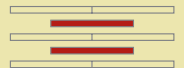
### Mason Contractor:

Bearing Masonry

### Photographer:

Prakash Patel Photography

Credits appear as submitted in entry form



# Hildreth Elementary School

Harvard, Massachusetts

Brick connects the past and the future at Hildreth Elementary School, a new Pre-K–5 school in Harvard, Massachusetts. Sited in the historic village center, the school pays homage to many of Harvard’s oldest buildings, some dating from 1732. The designers employed brick in different blends, sizes, and patterns to create a stunning and functional environment that reflects the town’s history and culture—and a nurturing new school where inspired students can learn and grow.

At once modern yet timelessly elegant, the brickwork on the school’s façade echoes the style and scale of the nearby library, which was built in 1891. On closer inspection, one notices that the new school’s matching scale and texture to its neighbors is achieved with wholly modern techniques.

The design team chose different blends of red brick in various sizes and formats. They paired linear 2-1/4" x 16" brick with larger 8" x 16" brick blocks, creating a dynamic and contemporary look. Perhaps most striking, the designers contrasted the gray, almost limestone, bottom Renaissance brick with the upper red brick in mountain red and

terracotta. The limestone brick mimics the stone foundation of historical buildings.

The designers also added ornamental flourishes. The 8" x 16" brick blocks run vertically atop horizontal bands, and sometimes bump out as end dots and long forms, adding dimension to the façade.

Inside, the Boston-based architecture and design firm charged their team of interior designers, planners, and graphic designers to create murals (one running 82 feet down the main corridor), wayfinding, learning niches, flexible learning spaces, and breakout areas throughout the school’s 26 core and specialty classrooms, gymnasium, cafeteria, and media center. This award-winning school is not just a building, but also a living history of the town and its surroundings. ■



### Architect:

Arrowstreet

### Brick Manufacturer:

Interstate Brick

### Brick Distributor:

Consolidated Brick

### Mason Contractor:

Costa Brothers Masonry

### Photographer:

Arrowstreet

Credits appear as submitted in entry form

## ASC ARTx3

Pine Bluff, Arkansas

Imagine trying to weave together a historic firehouse, a defunct dairy creamery, and a derelict auto parts shop into something totally new. Something that celebrates the arts. Something that lets folks believe in their downtown again. ASC ARTx3 is the culmination of an ambitious renovation effort by The Arts and Science Center for Southeast Arkansas to expand community and art space in downtown Pine Bluff.

The traditional Main Street brick structures boast a front façade of rich red brick combined with precast accents, along with a mix of brown and red brick on the side and rear façades. How to respect the architectural pasts while serving their new art disciplines became a driving theme of every decision the design team made.

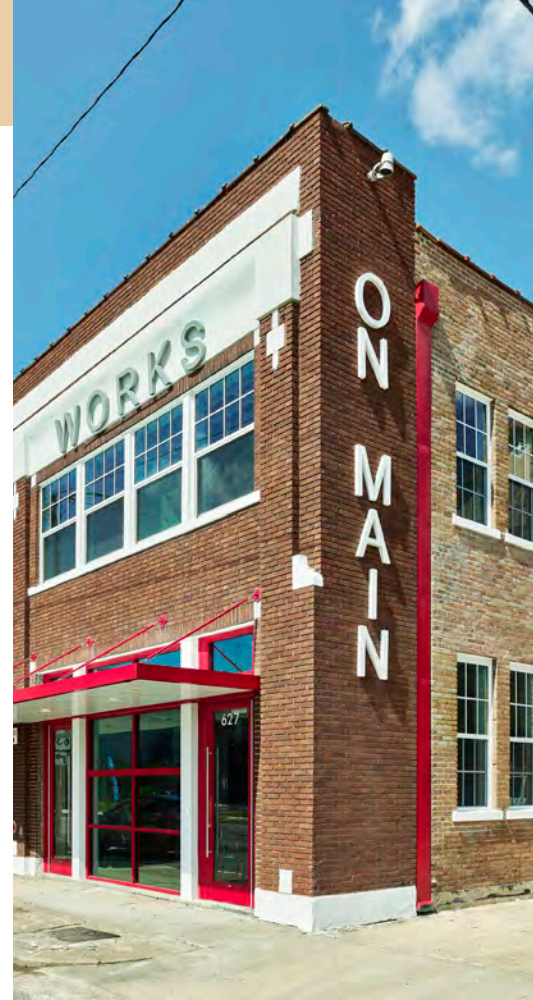
The first re-imagined building, ARTSpace on Main, preserves many of the original building features. All original window openings remain,



and the original brick is restored, exposed, and celebrated, bringing a richness, warmth, and texture to the space. The existing commercial storefronts were replaced with bold, red bi-fold garage doors similar to the original firehouse doors. Ground-level laminate flooring was removed to uncover original concrete, which was refinished. During renovations, an advertising mural for O.K. Purity Maid Ice Cream was discovered, which was carefully cleaned and preserved to be a highlight of the space.

The second renovated building, ART WORKS on Main, was until recently an auto parts store in disrepair. The thrust of the renovation included a 65-seat theater and 5 renovated apartments for resident artists. The black box theater was carved into the center of the space, allowing the apartments and public spaces to take advantage of the natural light from the restored window openings.

Today, Pine Bluff's arts center provides 24/7 community engagement along with a feeling of civic ownership, pride, and a sense of progress. ■



**Architect:**

AMR Architects in collaboration with DesignLAB architects

**Mason Contractor:**

East Harding

**Photographer:**

Tim Hursley

Credits appear as submitted in entry form



# Art Center of Aranya, Jinshanling

Hebei – China

Nestled in a mountainous community near the Great Wall of China, perched on a ridge, with 360-degree vistas of the vast surrounding mountains, the Aranya Jinshanling Art Center stands out like a lighthouse, guiding the residents back home after a long drive from Beijing.

Instructed to create a culturally significant public building, the design team chose red veneer brick as the main building material. Brick's warm red color reflects the tones of the surrounding North Chinese mountains. In addition, the solidness of this prominent brick volume echoes the nearby Great Wall.

The Art Center consists of fifteen brick pavilions of different sizes and functions (ranging from reading spaces, terraces, entrances, staircases, lifts, and subsidiary rooms) covered by a large roof. Between these pavilions, space flows and accommodates various cultural and social activities. The warm red color of the brick reflects the changing seasons and creates a traditional Chinese aesthetic. The high, thick steel grid roof and the use of brick materials in line with the retaining walls and outdoor paving create a sense of the outdoors under



the covered space. Instead of direct light, the interior is exposed to an atmosphere of soft, even, natural light.

The designers chose four schemes for the brick surface according to varied budgets and requirements, from the stereotonic red brick to the patterns of tiles. Additionally, the team applied red tiles for both the wall and the ground, trying their best to keep all tiles complete, adjusting with the mortar joint. The pattern changes to achieve delicate ornament quality.

The pavilions are arranged in a way that disrupts and reconnects the views of the surrounding landscape, inspired by the Chinese philosophy and art of painting. The design invites people to imagine and explore the space and the scenery, creating a unique experience that combines human cognition with spatial design. ■



**Architect:**

Atelier Archmixing

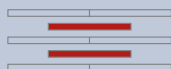
**Brick Manufacturer:**

Yixing Fubang Architectural  
Ceramics Co., Ltd.

**Photographer:**

ZHU Runzi

Credits appear as submitted in entry form



## NetApp - Wichita State University

Wichita, Kansas

Inside the 168,000-square-foot NetApp office and research building on the Wichita State University's Innovation Campus, serious technological advances happen every day. It houses 600 workstations and a state-of-the-art data center for product development and testing. But when the data scientists and technologists need a break from it all, a comforting, natural world awaits just outside the door.



The site design consultants, consisting of a team of landscape architects and civil, structural, and electrical engineers, worked closely with the owner, general contractor, and project architects to create a welcoming space that encourages social interaction and fosters creativity. The project's signature element is the use of brick paving throughout the high-use areas. The brick

manufacturer provided a wide range of warm gray earth tones that complement the natural surroundings and create unique patterns and color mixes. Playing with the different hues and patterns, the hardscape changes and surprises as the brick run from horizontal to vertical, light to dark. The brick paving also serves a functional purpose, as it is permeable and helps reduce stormwater runoff and erosion.

The brick paving is not only aesthetically pleasing, but it is also durable. Clay brick offers wear longevity and color retention, which are essential for meeting NetApp's high standards and goals.

While NetApp's architecture dominates the space, it's the landscape design that really shines. The design integrates a multi-layered water ecosystem, seated terraces, walking paths, bridges, a sports court, and a public plaza.

Today, NetApp's new facility is more than just a building. It's a testament to NetApp's vision of designing with nature in parallel, and creating a place where people can work, learn, play, and innovate together. ■



**Architect:**

MKEC Engineering, Inc.

**Brick Manufacturer:**

The Belden Brick Company

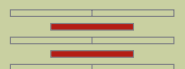
**Brick Distributor:**

Lusco Brick

**Photographers:**

Laura Frisella &  
Essential Images Photography

Credits appear as submitted in entry form



## The 801 - Oak Park

Oak Park, Illinois

Oak Park, Illinois' newest affordable housing development, The 801, sits surrounded on all sides by historic 1920s architecture, including notable works by the likes of Frank Lloyd Wright. Amidst such architectural grandeur, this rare new construction project had to live up to the neighborhood's standards while, at the same time, conform to a cost-conscious budget of fixed-income residents.

The 801 consists of a single 4-story mixed-use building containing 37 rental-affordable apartments. The ground floor consists of commercial space with residences above, including two live/work apartments. A top floor lounge and roof terrace provide spaces for residents to gather.

In the earliest planning stages, the design team selected brick as the most appropriate material to intermingle the project amongst its vintage neighbors and ensure positive community feedback. By pairing this classic material with rectilinear contemporary forms, the building thoughtfully unites past with present.

The team employed a custom-designed brick in three shades, creating a variegated, neutral color palette of cool gray tones. In addition, two rows of recessed "Obsidian" black brick above the first floor add additional interest and visually separate the building's massing by function, while entryways step

back from the street into welcoming alcoves lined with warm brown brick.

In opting for a long-format 2.25" x 16" brick with expressed horizontal mortar joints and flush vertical joints, the architects were able to create eye-catching horizontality that pays subtle homage to the Midwestern Prairie Style so often associated with Chicago and its surroundings. The larger brick size also allowed the cost-conscious project to remain within budget without sacrificing aesthetics or material quality. Current and future residents, whose fixed incomes determine their eligibility to live here, undoubtedly appreciate the energy-efficiency of their new brick home, as well as its clean, crisp modernity. ■



**Architect:**

DesignBridge Ltd.

**Brick Manufacturer:**

Interstate Brick

**Brick Distributor:**

Bricks Incorporated

**Mason Contractor:**

RV Builders

**Photographer:**

Tom Harris

Credits appear as submitted in entry form



## “The Brickyard” (Private Residence)

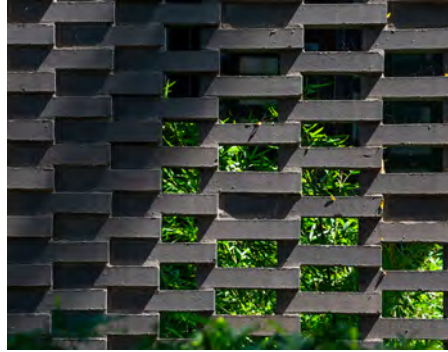
Chicago, Illinois

What would you build for your forever home? One family in Chicago, relocating from Manhattan to their Midwestern roots, wanted a home they could grow old in and pass down to their children—a legacy home.

Passionate about architecture and sustainability, the homeowners asked the design team for a light-filled, modern residence with a strong connection to the outdoors and a sense of cozy seclusion.

The design team selected brick as the primary building material for its low environmental impact, inherent warmth, and track record of maintenance-free longevity. The choice also ties the property's contemporary aesthetic with its many historical, masonry-clad neighbors.

The house impresses with its elegant and modern design, featuring a series of interlocking rectilinear brick volumes punctuated by large windows. Dark-black 2-1/4" x 16" bricks adds a sense of horizontality and texture to each form. The most distinctive design element—a brick screen wall along the



front façade—creates a layer of privacy between the home and the city. The wall's 2-1/4" x 12" solid brick are offset from one another to create a perforation. Carrying the exterior materials indoors allows for seamless spatial flow. Interior brickwork, including accent walls and a large central fireplace, provides eye-catching visual contrast within the bright and airy rooms.

“The Brickyard,” as the home is called, is a case study in exploring brick's luxuriousness. In the summertime, long sunbeams ornament the building with dazzling, ever-changing arrays of shadows; plants peek between apertures in the brick and add patterns of their own. Come wintertime, the home's velvety textures

complement and contrast with soft piles of snow. No matter the season, this is a home that will be cherished for generations to come. ■



**Architect:**

dSpace Studio

**Brick Manufacturer:**

Interstate Brick

**Brick Distributor:**

Bricks Incorporated

**Mason Contractor:**

RMF Construction, Inc.

**Photographers:**

Will Quam &  
Tony Soluri

Credits appear as submitted in entry form



## THIN BRICK

# The Brick & The Machine

Culver City, California

This is a tale of two office buildings. One is an homage to the past, the other to the future. One is three stories, the other is four. One is warm and inviting, the other is sleek and efficient. Interlocked by both proximity and by name, The Brick and The Machine offers two different office environments, each with its own character and charm.

The Brick, the north side of the building, is clad in thin-set brick, referencing Culver City's historical landmarks. Masons meticulously installed the manganese ironspot smooth norman thin brick in varied depths based on an abstraction of organic vegetation. The face brick was also installed in a vertical stack bond to reflect the non-structural nature of face brick and to allow for integrated control and expansion joints. The material has a metallic finish that absorbs and reflects light differently based on the angle of the sun.

The Machine is a showcase of innovation and technology. Its façade is covered with



blue panels, perforated with custom patterns that allow natural light and ventilation. These deeply saturated blue FEVE-grade anodized aluminum panels are operable, offering the ability to move the screens and take in the best views, while allowing interior air flushing. The building's sizeable windows are also dynamic and adaptable, equipped with movable screens that control glare and temperature. The ever-changing nature of the exterior screens represents constant shifting light while offering practical solar heat gain and glare control.

The two office environments are connected by a common thread: a passion for creativity and collaboration. They share a main entrance as well as a series of open spaces that foster interaction and communication, such as a multi-story courtyard and a landscaped roof terrace. The indoor/outdoor nature of the building enhances the well-being and productivity of its occupants. ■



### Architect:

Abramson Architects

### Brick Manufacturer:

Endicott Clay Products Company

### Mason Contractor:

J Ginger Masonry

### Photographers:

Sean Costello &  
Christy Wolfe

Credits appear as submitted in entry form

## Enlace

Chicago, Illinois

What happens when you scramble two similarly shaped materials together to create something new and boundary-pushing? In Chicago, the result is the flagship building of non-profit Enlace, a bold, statement-making design that interweaves brick and glass block, the interior with the exterior, and the community with the non-profit's outreach.

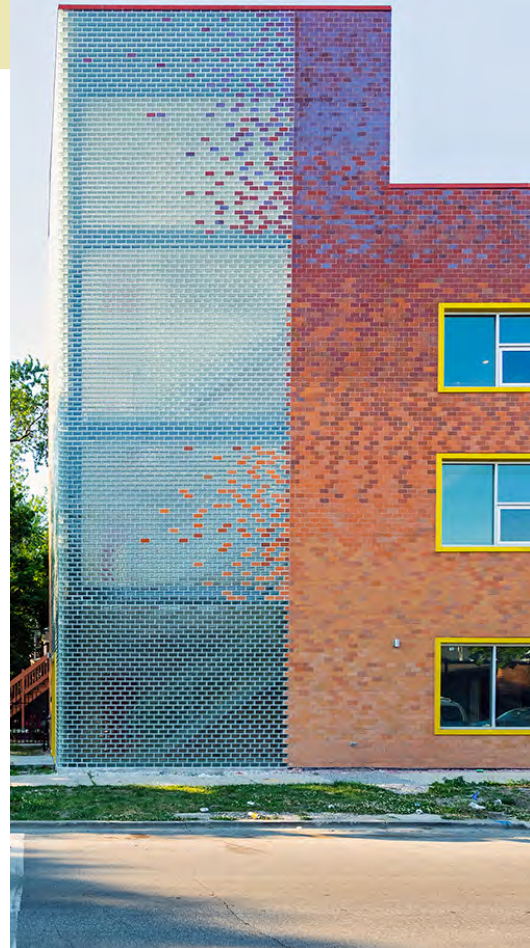
Located in Chicago's Little Village, a proud Mexican-American neighborhood, the Enlace building provides a welcoming space for locals seeking education opportunities, community programming, and violence prevention. The non-profit challenged the design team to conduct a block-to-block study of the urban qualities and materiality in the surrounding areas. Brick masonry and glass block emerged as a familiar palette

for homes and corner commercial buildings throughout. Drawing upon brick and glass block's almost limitless design potential, the team applied them in an

innovative "weaving" fashion to create a familiar, yet inspiring, motif through masonry. The gradient of brick tones from yellow to deep red and the interlacing of glass block and opaque brick speak to the definition of the organization's name, ("enlace" means to intertwine, or tie together) and is expressive of the organization's mission of "connecting" and "coming together" with community.

Looking at this interweaving of material, one asks: When does a brick become a glass block? Or vice versa?

The use of glass block on the corner of the building allows for natural light immersion throughout the day and night, creating a lantern effect at night, and establishing the Enlace building as a new beacon of community through its masonry detailing and articulation. Symbolically, the Enlace building serves as a metaphor for community, culture, and heritage through its innovative use of both brick and glass block as one woven element that harnesses and celebrates both community and the organization. ■



**Architect:**

Canopy

**Brick Manufacturers:**

Sioux City Brick,  
The Belden Brick Company, &  
Palmetto Brick Company

**Brick Distributor:**

Brickworks Supply LLC

**Mason Contractor:**

Blackwood Group

**Photographer:**

Sarah Crowley

Credits appear as submitted in entry form



# The 2022 Brick in Architecture Award Winners

Several other projects were selected for Gold, Silver, and Bronze awards based on their scores totaling in the top percentages of their respective categories. Gold, Silver, and Bronze award winners are as follows:

## GOLD WINNERS

### COMMERCIAL

#### Enlace

Location: Chicago, Illinois  
Architect: Canopy  
Brick Manufacturers: Sioux City Brick; The Belden Brick Company; Palmetto Brick Company  
Brick Distributor: Brickworks Supply, LLC  
Mason Contractor: Blackwood Group

#### The Grand Mulberry

Location: New York, New York  
Architect: Morris Adjmi Architects  
Brick Manufacturer: Glen-Gery  
Brick Distributor: Extech Building Materials  
Mason Contractor: Ark Builders Corp

### EDUCATIONAL (Higher Education)

#### University of New Haven Bergami Center for Science, Technology, and Innovation

Location: West Haven, Connecticut  
Architect: Svigals + Partners  
Brick Manufacturer: Glen-Gery  
Brick Distributor: Mack Brick Company  
Mason Contractor: Connecticut Mason Contracting

### EDUCATIONAL (K-12)

#### Lakeview Elementary School

Location: Sugar Land, Texas  
Architect: Kirksey Architecture  
Brick Manufacturer: Acme Brick Company  
Mason Contractor: Newcastle Masonry, Inc.

### HISTORIC RENOVATION

#### 1846 Row House

Location: New York, New York  
Architect: Arpad Baksa Architect, PC  
Brick Distributor: Extech Building Materials  
Mason Contractor: MEGII Contracting and Design, LLC

### INTERNATIONAL

#### Quay Quarter Lanes - 8 Loftus Street

Location: Sydney, Australia  
Architect: Studio Bright  
Brick Manufacturer: Brickworks  
Brick Distributor: Brickworks Supply, LLC

### PAVING & LANDSCAPING

#### Patten Square

Location: Chattanooga, Tennessee  
Architect: WMWA Landscape Architects, in collaboration with Asa Engineering  
Brick Manufacturer: The Belden Brick Company  
Brick Distributor: Acme Brick Company  
Mason Contractor: P&C Construction, Inc.

### RESIDENTIAL – MULTI-FAMILY

#### The Factory Lofts

Location: Boston, Massachusetts  
Architect: Hacin, in collaboration with the Holland Companies who acted as Executive Architect  
Brick Manufacturers: Endicott Clay Products; Sioux City Brick  
Brick Distributors: Spaulding Brick Company; Consolidated Brick  
Mason Contractor: MP Masonry, Inc.

### RESIDENTIAL – SINGLE FAMILY

#### Garden Laneway House

Location: Toronto, Canada  
Architect: Williamson Williamson  
Brick Manufacturer: The Belden Brick Company  
Brick Distributor: Mason's Masonry  
Mason Contractor: Magnum Masonry

### THIN BRICK

#### White Plains Hospital

Location: White Plains, New York  
Architect: Perkins Eastman  
Brick Manufacturer: Cloud Ceramics  
Brick Distributor: Belden Tri-State Building Materials  
Mason Contractor: Coreslab Structures

## SILVER WINNERS

### COMMERCIAL

#### The Drake Hotel Modern Wing

Location: Toronto, Canada  
Architect: Diamond Schmitt  
Mason Contractor: Limen Group

### EDUCATIONAL (Higher Education)

#### University of Tennessee West Campus Dining Hall

Location: Knoxville, Tennessee  
Architect: Johnson Architecture, Inc.  
Design Consultant: SimmonsStudio  
Brick Manufacturer: General Shale  
Mason Contractor: Gentry & Painter, Inc.

### EDUCATIONAL (K-12)

#### Northeast Community Propel Academy

Location: Philadelphia, Pennsylvania  
Architect: Stantec  
Brick Manufacturer: Glen-Gery  
Brick Distributor: Brickworks Supply, LLC  
Mason Contractor: Gilbane Building Company

### HISTORIC RENOVATION

#### 48 On The Park

Location: Lititz, Pennsylvania  
Architect: RLPS Architects  
Brick Manufacturer: Glen-Gery  
Brick Distributor: Brickworks Supply, LLC  
Mason Contractor: Oak Tree Development Group

### INTERNATIONAL

#### Reservoir Street

Location: Surry Hill, Australia  
Architect: SJB  
Brick Manufacturer: Brickworks  
Brick Distributor: Brickworks Supply, LLC  
Mason Contractor: Cornerstone Property Group

### RESIDENTIAL – MULTI-FAMILY

#### 845 W. Madison

Location: Chicago, Illinois  
Architect: Grec Studio  
Brick Manufacturer: The Belden Brick Company  
Brick Distributor: Brickworks Supply, LLC  
Mason Contractor: J & E Duff

### RESIDENTIAL – SINGLE FAMILY

#### H-House

Location: Monotick, Canada  
Architect: Everyday Studio  
Brick Manufacturer: Glen-Gery  
Mason Contractor: Nowacki Homes

### THIN BRICK

#### 320 N Sangamon

Location: Chicago, Illinois  
Architect: Solomon Cordwell Buenz  
Brick Distributor: Bricks Incorporated  
Mason Contractors: ALL Masonry; Bourbon Tile; International Concrete Products

## BRONZE WINNERS

### COMMERCIAL

#### 1111 West Addison

Location: Chicago, Illinois  
Architect: Hirsch MPG LLC  
Brick Manufacturers: Endicott Clay Products Company; Sioux City Brick  
Brick Distributor: Brickworks Supply LLC  
Mason Contractor: A-One Group, Ltd.

### Broadway Youth Center

Location: Chicago, Illinois  
Architect: Wheeler Kearns Architects  
Brick Manufacturer: Bowerston Shale  
Brick Distributor: Brickworks Supply LLC  
Mason Contractor: JE Duff

### The Joan and Paul Rubsclager Building

Location: Chicago, Illinois  
Architect: HDR Architecture  
Brick Manufacturer: Endicott Clay Products Company  
Brick Distributor: Brickworks Supply LLC  
Mason Contractor: ALL Masonry

### EDUCATIONAL (Higher Education)

#### University of MD USG Bio-Medical Sciences

Location: Rockville, Maryland  
Architect: Cooper Carry Architects  
Brick Manufacturer: Taylor Clay Products  
Brick Distributor: Potomac Valley Brick & Supply Co.  
Mason Contractor: Henry J. Knott Masonry, Inc.

### Vanderbilt University, Bronson Ingram Building

Location: Louisville, Kentucky  
Architect: David M. Schwarz Architects  
Brick Manufacturer: Glen-Gery  
Brick Distributor: Alley-Cassetty Brick  
Mason Contractor: Kelly Construction

### EDUCATIONAL (K-12)

#### Scanlan Campus Center, Loomis Chaffee School

Location: Windsor, Connecticut  
Architect: Atkin Olshin Schade Architects  
Brick Manufacturer: Glen-Gery  
Mason Contractor: Civitillo Masonry

### HISTORIC RENOVATION

#### 939 W Fulton

Location: Chicago, Illinois  
Architect: Hartshorne Plunkard Architecture  
Historic Preservation Consultant: Revive Architecture  
Brick Manufacturer: McNear Brick (Interior Brickwork)  
Brick Distributor: Bricks Incorporated  
Mason Contractors: Mark 1 Restoration; Kazmer Tile & Stone

### INTERNATIONAL

#### Northside House

Location: South Melbourne, Australia  
Architect: Wellard Architects  
Brick Manufacturer: Brickworks  
Brick Distributor: Brickworks Supply, LLC  
Mason Contractor: Prolifica Building

### Red-Brick Courtyard House

Location: Changde City, Hunan Province, China  
Architect: ANT ARCH  
Mason Contractor: Beijing jinzhu Manjiang Architectural Decoration Engineering Co., Ltd.

### Project Burma Hospital

Location: Magyizin, Germany  
Architect: a+r Architekten

### PAVING & LANDSCAPING

#### Arnolds Park Lake Street

Location: West Lake Okoboji, Iowa  
Architect: Beck Engineering  
Brick Manufacturer: The Belden Brick Company  
Mason Contractor: Blue Water Prairie Landscaping

### Steeplechase Elementary

Location: Walton, Kentucky  
Architect: Robert Ehmet Hayes & Associates - Architects, PLLC  
Brick Manufacturer: The Belden Brick Company  
Brick Distributor: Division 4 Inc.  
Mason Contractor: Human Nature, Inc.

### RESIDENTIAL – MULTI-FAMILY

#### 170 Erie Street

Location: Jersey City, New Jersey  
Architect: Studio V Architecture  
Brick Manufacturers: Taylor Clay Products; Endicott Clay Products Company  
Brick Distributor: Belden Tri-State Building Materials  
Mason Contractor: NKJ Construction LLC

### Peoria Green

Location: Chicago, Illinois  
Architect: SGW Architecture & Design  
Brick Manufacturer: Yankee Hill  
Brick Distributor: Brickworks Supply, LLC  
Mason Contractor: Masonry Systems, Inc.

### Radio Hotel & Tower

Location: New York, New York  
Architect: MVRDV  
Brick Distributor: Belden Tri-State Building Materials  
Supplier: Tabs Wall System  
Mason Contractor: MDB Development Corporation

### Tribeca Apartments D.C.

Location: Washington, District of Columbia  
Architect: Torti Gallas + Partners  
Brick Manufacturer: Endicott Clay Products Company  
Brick Distributor: Potomac Valley Brick & Supply Co.  
Mason Contractor: Diverse Masonry Corporation

### RESIDENTIAL – SINGLE FAMILY

#### Atlanta All Masonry Home

Location: Atlanta, Georgia  
Architect: Orthodox Masonry Company  
Brick Manufacturer: Old Carolina Brick Company  
Brick Distributor: North Georgia Brick Co, Inc.  
Mason Contractor: Orthodox Masonry Company

### THIN BRICK

#### Heist Brewery

Location: Charlotte, North Carolina  
Architect: Stone Creations  
Brick Manufacturer: General Shale  
Mason Contractor: Dave Rolls

## A Special Thanks to This Year's Judges:

Peter Carideo, RA, LEED AP – HDR  
Timothy L. Graviss, AIA – JRA Architects  
Ed Rawlings – Rawlings architects pc

David Richter, FAIA, LEED AP – Richter Architects  
Shann Rushing, AIA, LEED AP – CLARKNEXSEN



# Let the next big development project you work on be you.

**Earn FREE online continuing education credits**

At BIA, we want to be a credit to your profession. Literally.

Architects can now earn AIA/CES learning units by completing classes.

For free. The classes are online—so you can take them when time allows.

From your home or your office.

How convenient is that?

[www.gobrick.com/education](http://www.gobrick.com/education)



Let the Brick Industry Association know about your firm's projects that reflect excellence in design using clay brick. Submit your project to the 2023 Brick in Architecture Awards Competition at [www.gobrick.com/awards](http://www.gobrick.com/awards).

Brick Industry Association  
12007 Sunrise Valley Drive, Suite 430  
Reston, VA 20191-3446  
P. 703.620.0010  
[www.gobrick.com](http://www.gobrick.com)