



# **BRICK** ARCHITECTURE

From the Brick Industry Association

The 2019 Brick in Architecture

# **AWARD WINNERS**

**COMMERCIAL | EDUCATIONAL (HIGHER EDUCATION / K-12) | PAVING & LANDSCAPING | MULTI-FAMILY RESIDENTIAL | SINGLE-FAMILY RESIDENTIAL**

Since 1989, the Brick in Architecture Awards have been one of the most prestigious national architectural award programs featuring clay brick. Architecture firms from around North America enter their best projects to be judged by a jury of their peers.

This year, a diverse panel of architects independently reviewed and scored each of the entries. Based on the technical and creative use of brick in meeting the aesthetic and functional design challenges, the Brick Industry Association is pleased to showcase the following projects, which were chosen as the Best in Class in their respective categories.



## COMMERCIAL DESIGN

# St. Vincent Mixed-Use Building

Austin, Texas

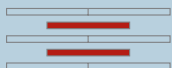
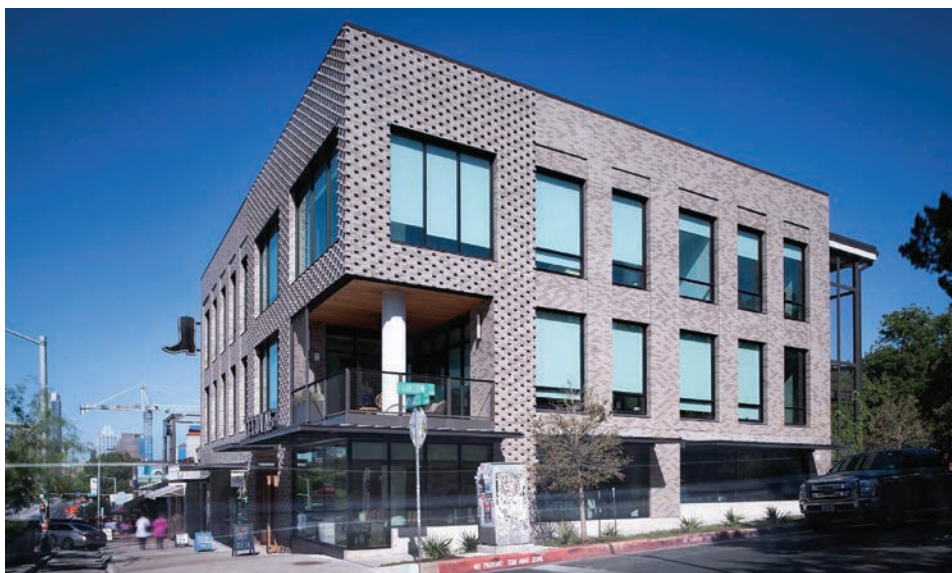
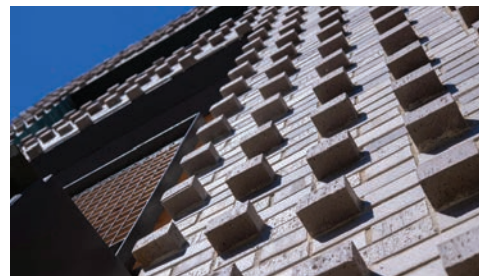
The St. Vincent Building reimagines a former thrift store parking lot in Austin's bustling South Congress retail district with a new three-story creative office and retail mixed-use building.

From the start, the architects wanted to connect the building with nature and the surrounding urban district. The top two floors of office space feature generous operable windows that give natural cross ventilation and effectively fill the entire office with daylight. All the circulation is outdoors, taking advantage of Austin's climate while allowing staff to get fresh air between meetings. The stairs are wrapped in native vines and face heritage live oaks on the property, providing much-needed shade. Office meeting space occurs both indoors and outdoors, and collaborative areas are tuned to feature great views.

A blend of brick shades and textures brings the design to life. By playfully turning the brick on end—extending out from the finish wall like knobs—the designers gave



the building's prominent corner its signature knobby look. This clever use of brick adds a diagonal grid of shadow play that changes through the day as the sun crosses the sky. The building echoes the historic use of masonry in the district even as the clean, ordered façade is clearly modern. As both the predominant surface material and driving design element, brick defines the 19,870-square-foot St. Vincent, its bold design animating the entire pedestrian district. ■



### Architect:

Lake|Flato Architects

### Brick Manufacturer:

Acme Brick Company

### Photographer:

Louis Curtis

Credits appear as submitted in entry form



## McCord Hall W. P. Carey School of Business, Arizona State University

Tempe, Arizona

The W. P. Carey School of Business at Arizona State University wanted a statement-making facility, one that would reflect the world-class caliber of its programs, research, and learning.

The result is the new 129,200-GSF McCord Hall, home to the School's flagship MBA and Executive Education programs, as well as the Honors and Graduate programs. From its conception, the University sought to create a new gateway into the heart of the ASU campus. McCord Hall's monumental, four-story façade with its sloping brick walls and an intimate courtyard, dramatically welcomes visitors to its teeming campus.

In Arizona, brick is a rich, time-tested, and local material. It also dominates the architecture across ASU's campus, where brick's warm, multi-colored earth tones are supremely compatible and provide a harmonious quality to the desert landscape. Taking advantage of brick's nearly endless design

possibilities, the architects leaned heavily into brick to create the curving façade, featuring a highly textured surface of projecting "corduroy" brick. Deep vertical windows, stretching multiple floors, frame the protruding brick designs that look similar to elements of a Navajo carpet. Additionally, brick's texture comes to life under the strong Arizona sun. The curved form of the building increases the natural dynamism of the projecting brick shadows and operates like a sundial as the sun moves.

Prominently located on the major campus axis of the famous Palm Walk, the new building establishes the Business School district with a striking public courtyard. McCord Hall not only engages the surrounding brick buildings, but it also welcomes students and directs campus-wide circulation. It ultimately achieves the Business School's main goal: to transform the Business School campus with a world-class building that is the heart and the soul of the W. P. Carey School community. ■



**Design Architect:**

Kohn Pedersen Fox Associates

**Architect-of-Record:**

RSP Architects

**Photographers:**

Tim Griffith;

Douglas A. Salin

Credits appear as submitted in entry form





# Bernard Zell Anshe Emet Day School Expansion

## Chicago, Illinois



Nothing welcomes like a grand entrance. But for decades, the worshippers and schoolchildren of the Bernard Zell Anshe Emet Day School (BZAEDS) and Anshe Emet Synagogue were greeted by an inconspicuous door off the parking lot. The message it sent was, “Hurry in, folks.” It signaled insularity. And it implied disconnection from its surrounding Chicago neighborhood. The new expansion turns that unwelcoming on its head.

From the moment the children enter their school, they are greeted by a gracious plaza, inviting loggia, and daylight spilling upon them. Their culture, faith, and community leap to life within the singular glass-and-brick volume that floats above the ground floor. The addition’s refinement and details distinguish the new from the old; the floating masonry volume belies the mass of the material, and the edges of masonry at the jambs reveal the thinness and delicacy of the masonry to viewers



both inside and outside the building. The light-colored brick wraps the school just as the tallit (prayer shawl) helps one to create a sacred space for reflection, learning, and prayer.

The true heart of this deeply spiritual design lies inside: a curved masonry and glass sacred space, the Makom Rina or ‘Place of Joy.’ Each of the 12 exposed curved masonry walls represents one of the twelve original tribes of Israel and is a simple double-wythe brick wall from floor to ceiling. The wythes of brick are tied together with headers, slightly pushed and pulled out of the wall, in a pattern that evokes the star of David. Dramatically, the interior head joints are raked open, so that participants can place prayers into the joints between the units, in an echo of the ancient

Western Wall of Jerusalem. Everything in this space, from the lighting to the custom doors, glazing, and built-in furniture, is designed to complement and highlight this masonry structure. It’s truly a spiritual home to the worshippers and children it serves. ■



### Architect:

Wheeler Kearns Architects

### Brick Manufacturer:

The Belden Brick Company

### Photographer:

Steve Hall, Hall + Merrick Photographers

Credits appear as submitted in entry form

## Smith Plaza, University of New Mexico

Albuquerque, New Mexico

Imagine designing a great room in your home — but no one ever wants to spend time there. Such was the predicament for University of New Mexico in Albuquerque. The heart and soul of their campus, a 3.3-acre open space that leads to the front door of the historic Zimmerman Library, remained empty, crumbling, and inhospitable under the scorching New Mexico sun. Smith Plaza required a complete renovation of all surfaces with the careful reconsideration of accessibility accommodating today's outdoor needs of students.

For inspiration, the design team turned to the surrounding landscape. They created a series of 'mesa plateaus' with strategic plantings and greenery that promote outdoor use for study, play, and classrooms. A brickwork of undulating curves was devised using complex geometry to outline the mesas. In addition, the brickwork functions in three ways: as the retaining wall for the mesa, as the durable edge of the walkways, and as the finishing visual edge condition between the walkways and mesas. The brickwork also allows for punctuated moments, where a series of brick was kicked forward to create a textured front edge. This not only is beautifully articulated, but it also prevents



skateboards, bicycles, and scooters from hopping onto the brickwork.

The design team chose brick paver for multiple reasons, foremost for its through and through coloration and durability. The pavers were also selected for the precision of cuts and geometries that were required in the project. Without the ability to manually cut and set the individual brick to form the undulating curves, the curves would have looked rough or approximated. Aesthetically, nothing comes close to the beauty of real brick pavers. Lastly, durability played major role: Smith Plaza will continue to be used extensively by the students and campus population. The brick construction of the edges of the 'plateaus' will absolutely endure.

Today, the Plaza is now constantly occupied. Teachers hold classes in outdoor rooms, students meet, hang out, and sit and read in the movable furniture. Smith Plaza has been wholly transformed by brick. ■



### Architects:

McCLAIN+YU Architecture & Design;  
MRWM Landscape Architects;  
SurfaceDesign, Inc.

### Photographers:

McCLAIN+YU Architecture & Design;  
Blake Marvin

Credits appear as submitted in entry form





## MLK Plaza

Bronx, New York

The 13-story MLK Plaza strikes a stately pose in the Bronx's Mott Haven neighborhood. With its contemporary masonry brick façade and a luxurious stripe of golden aluminum composite metal running across the 7<sup>th</sup> floor, one might presume it commands handsome rents. Yet, this LEED Platinum building houses 167 apartments for moderate-, low-, and very low-income renters. MLK Plaza is one of the first developments to use the City's new Zoning for Quality Affordability regulation, which allowed a rezoning of the property from manufacturing to residential.

As is fitting to the spirit of affordable housing, a desire to share views drove the design. Throughout the building, residents have sweeping views of the Manhattan skyline and East River. Residents also have access to recreation and community rooms, a rear patio, and a gym at the golden 7<sup>th</sup> floor. The exterior design embraces the neighborhood's industrial identity with dark gray brick and metal panels. The gold color, however, provides a bright counterpoint to that aesthetic and reflects the



material quality of this housing. The gold swath at the 7<sup>th</sup> floor also aligns visually with the adjacent six-story building. This helps to set MLK Plaza more comfortably within the scale of the surrounding properties. Nestled within this band is a cutout for an open-air terrace, which breaks up the block-long façade. The fully glazed, double-height lobby pulls daylight in and gives street-level illumination at night. A mural of the building's namesake by local artists Tats Cru graces a lobby wall. ■



### Architect:

Magnusson Architecture & Planning P.C.

### Brick Manufacturer:

Endicott Clay Products Company

### Brick Distributor:

Belden Tri-State Building Materials

### Photographers:

David Sundberg/Esto;

Miguel de Guzman/Imagen Subliminal

Credits appear as submitted in entry form



## Chicago House

Chicago, Illinois

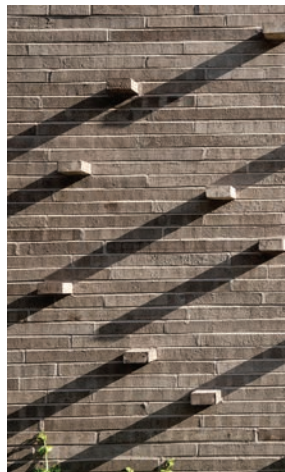
How does a home look totally different from its neighbors, yet fit in perfectly? Chicago House at 175 West 10<sup>th</sup> Street does just that. Even though this residence, with its contemporary design, breaks stylistically from its neighbors, the home speaks to its surroundings with a common materiality, geometry, and scale that is neither fawning nor disrespectful to the area's typology. In an age of teardowns with monster homes replacing them, Chicago House stays true to the roots of its surroundings.

Built in Chicago's Ravenswood Manor, this historic neighborhood is known for its 20<sup>th</sup>-century and prewar single-family brick homes. And indeed, Chicago House is no different. The design team employed a brick called Roman Maximus, which is 24 inches in length—longer than any commercially made brick in North America. The long, thin brick employed in its construction gives the home a timeless quality. Moreover, this elongated brick offers designers endless sculptural possibilities as well. Placed extruding from one of the walls, the brick adds striking texture, as shadows create changing patterns as the sun progresses during the day. It's a



fitting design for its owner, a black-and-white photographer. With an almost gallery-like interior, the screen walls and soldier coursing are enhanced architecturally by the Roman Maximus, whose gray-brown tone creates a neutral backdrop for the black and white photographic prints which adorn the walls.

Chicago House is truly a celebration of brick's distinctive ability to evoke feelings of sophistication, exclusivity, and prestige all at once. ■



**Architect:**

John Ronan Architects

**Brick Manufacturer:**

Sioux City Brick  
(subsidiary of Glen-Gery)

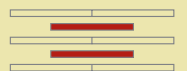
**Brick Distributor:**

Illinois Brick Company

**Photographer:**

Tony Armour Photography

Credits appear as submitted in entry form



# The 2019 Brick in Architecture Award Winners

Several other projects were selected for Gold, Silver, and Bronze awards based on their scores totaling in the top percentages of their respective categories. Gold, Silver, and Bronze award winners are as follows:

## GOLD WINNERS

### COMMERCIAL

#### Savannah Cultural Arts Center

Location: Savannah, Georgia  
Architect: GMSHay  
Brick Manufacturers: Acme Brick Company  
General Shale, Inc.

### EDUCATIONAL (Higher Education)

#### Norm Asbjornson Hall

Location: Bozeman, Montana  
Architect: A&E in collaboration with ZGF  
Brick Manufacturer: Endicott Clay Products Company  
Brick Distributor: Hebron Brick Company

### EDUCATIONAL (K-12)

#### Community Consolidated School District 59

#### Professional Development and Administration Center

Location: Elk Grove Village, Illinois  
Architect: ARCON Associates  
Brick Manufacturer: Glen-Gery Corporation

#### Ray Braswell High School, Denton ISD

Location: Aubrey, Texas  
Architect: VLK Architects  
Brick Manufacturer: Acme Brick Company

### HISTORIC RENOVATION

#### North Andover Town Hall

Location: North Andover, Massachusetts  
Architect: Context Architecture  
Brick Manufacturer: Morin Brick

### INTERNATIONAL

#### Arc

Location: Sydney, Australia  
Architect: Koichi Takada Architects  
International Brick Manufacturer: Bowral Bricks (subsidiary of Brickworks)

### PAVING & LANDSCAPING

#### Urby Harrison

Location: Harrison, New Jersey  
Landscape Architect: Mellilo + Bauer  
Brick Manufacturer: Pine Hall Brick Company, Inc.  
Brick Distributor: Church Brick Company

### RESIDENTIAL – MULTI-FAMILY

#### Henry Hall

Location: New York, New York  
Architect: BKSK Architects  
Brick Manufacturer: Endicott Clay Products Company  
Brick Distributor: Belden Tri-State Building Materials

#### Nine E. 33<sup>rd</sup>

Location: Baltimore, Maryland  
Architect: Design Collective  
Brick Manufacturer: Glen-Gery Corporation

#### Soho Apartment Building

Location: New York, New York  
Architect: Building Studio Architects  
Brick Manufacturer: Glen-Gery Corporation  
Brick Distributor: Glenwood Mason Supply Company

### RESIDENTIAL – SINGLE FAMILY

#### Walnut Estates

Location: Philadelphia, Pennsylvania  
Architect: Moto Designshop  
Brick Manufacturer: Acme Brick Company  
Brick Distributor: Belden Tri-State Building Materials

## SILVER WINNERS

### COMMERCIAL

#### The Whitney Hotel

Location: Boston, Massachusetts  
Architect: Hacin + Associates  
Brick Distributor: Consolidated Brick & Building Supply Company, Inc.

### EDUCATIONAL (Higher Education)

#### Tepper Quad Project

Location: Pittsburgh, Pennsylvania  
Architect: Moore Ruble Yudell Architects & Planners  
Brick Manufacturer: The Belden Brick Company

### EDUCATIONAL (K-12)

#### Briarwood Elementary

Location: Prairie Village, Kansas  
Architect: Hollis + Miller Architects  
Brick Manufacturer: Glen-Gery Corporation

#### University Park Elementary School

Location: University Park, Texas  
Architect: Stantec  
Brick Manufacturer: Acme Brick Company

### PAVING & LANDSCAPING

#### Encore Casino

Location: Everett, Massachusetts  
Landscape Architect: Lifescapes International, Inc. in collaboration with Wynn Design & Development  
Brick Manufacturer: The Belden Brick Company  
Brick Distributor: Spaulding Brick Company

#### Westerville City Hall and Police Parking

Location: Westerville, Ohio  
Landscape Architect: Poddesign  
Brick Manufacturer: The Belden Brick Company  
Brick Distributor: Hamilton Parker Company

### RESIDENTIAL – MULTI-FAMILY

#### Phi Mu Fraternity (Women's)

Location: Fayetteville, Arkansas  
Architects: Michael G. Imber, Architects; Core Architects; Cunningham+Associates  
Brick Manufacturer: Acme Brick Company

### RESIDENTIAL – SINGLE FAMILY

#### Wicker Park Residence

Location: Chicago, Illinois  
Architect: Wheeler Kearns Architects  
Brick Manufacturer: Watertown Brick Company (subsidiary of General Shale, Inc.)

## BRONZE WINNERS

### COMMERCIAL

#### King Township Municipal Administration Centre

Location: King City, Ontario, Canada  
Architect: +VG Architects  
Brick Manufacturer: The Belden Brick Company  
Brick Distributor: Mason's Masonry Supply Ltd.

#### South Congress Hotel

Location: Austin, Texas  
Architect: Dick Clark Architecture / Michael Hsu Office of Architecture  
Brick Manufacturers: D'Hanis Brick & Tile Company; Meridian Brick; Elgin Butler; Acme Brick Company

### EDUCATIONAL (Higher Education)

#### Drexel University - The Center for Jewish Life

Location: Philadelphia, Pennsylvania  
Architect: Natoma Architects  
Brick Manufacturer: The Belden Brick Company  
Brick Distributor: Diener Brick Company

#### Montana State University Dining Pavilion

Location: Bozeman, Montana  
Architect: Mosaic Architecture, P.C.

#### Moody Center for the Arts - Rice University

Location: Houston, Texas  
Architect: Michael Maltzan Architecture, Inc.  
Brick Manufacturer: Endicott Clay Products Company  
Brick Distributor: Upchurch Kimbrough

#### Willie and Don Tykeson Hall - University of Oregon

Location: Eugene, Oregon  
Architect: OFFICE 52 Architecture, Design Architect, Portland, Oregon; Rowell Brokaw, Local Architect-of-Record

### EDUCATIONAL (K-12)

#### Shakopee High School

Location: Shakopee, Minnesota  
Architect: Wold Architects and Engineers  
Brick Manufacturer: Endicott Clay Products Company

#### New Laraway Elementary School

Location: Joliet, Illinois  
Architect: Legat Architects  
Brick Manufacturer: Endicott Clay Products Company  
Brick Distributor: Illinois Brick Company

### PAVING & LANDSCAPING

#### Rows Wharf Hotel

Location: Boston, Massachusetts  
Architect: Wessling Architects  
Brick Manufacturer: The Belden Brick Company  
Brick Distributor: Spaulding Brick Company

#### University of Connecticut Fairfield Circle

Location: Storrs, Connecticut  
Architect: UConn University Planning, Design & Construction  
Brick Manufacturer: The Belden Brick Company  
Brick Distributor: Consolidated Brick & Building Supply Company

### RESIDENTIAL – MULTI-FAMILY

#### 175 West 10<sup>th</sup> Street

Location: New York, New York  
Architect: BKSK Architects  
Brick Manufacturer: Watertown Brick Company (subsidiary of General Shale, Inc.)  
Brick Distributor: Belden Tri-State Building Materials

### RESIDENTIAL – SINGLE FAMILY

#### Unhistoric Townhouse

Location: New York, New York  
Architect: System Architects  
Brick Manufacturer: The Belden Brick Company  
Brick Distributor: Belden Tri-State Building Materials

## A Special "Thank You" to This Year's Judges:

Stefanie Greenfield, AIA LEED® AP - CambridgeSeven

Matthew Z. Leach, AIA - Page

Colby Lewis, AIA, NCARB, CEFPI, LEED® AP - STR Partners LLC

Duncan Lyons, RIBA, LEED® AP BD+C – Gensler



# Let the next big development project you work on be you.



## Earn FREE online continuing education credits

At BIA, we want to be a credit to your profession. Literally. Architects can now earn AIA/CES learning units by completing classes. For free. The classes are online—so you can take them when time allows. From your home or your office. How convenient is that?

[www.gobrick.com/education](http://www.gobrick.com/education)



Let the Brick Industry Association know about your firm's projects that reflect excellence in design using clay brick. Submit your project to the 2020 Brick in Architecture Awards Competition at [www.gobrick.com/awards](http://www.gobrick.com/awards).

Brick Industry Association  
12007 Sunrise Valley Drive, Suite 430  
Reston, VA 20191-3446  
P. 703.620.0010 • F. 703.620.3928  
[www.gobrick.com](http://www.gobrick.com)