



COMMERCIAL DESIGN

ENLACE

Chicago, Illinois

Enlace is a not-for-profit organization assisting the Little Village community on Chicago's West Side, through violence prevention, education, and community development programs. The building features operable door panels that open the interior community space to the street to strengthen the relationship between Enlace and its surroundings while blurring the relationship of interior and exterior. Flexible spaces for working, gathering, learning, meditation, and other uses are arranged along the 3-story building interior as well as the 4th floor rooftop community vegetative garden. Interior multi-purpose spaces provide additional flexibility to accommodate different programs that address the needs of both the community and the organization.

The gradient of brick tones from yellow to deep red, and the interlacing of glass block and opaque brick speak to Enlace's organization definition (enlace translated in Spanish, means to intertwine, or tie together) expressive of the organization's mission of "connecting" and "coming together" with community.

The use of glass block on the corner of the building allows for natural light immersion throughout the day and night, creating a lantern effect at night, and establishing the Enlace building



as a new beacon of community through its masonry detailing and articulation.

Symbolically, the Enlace building serves as a metaphor for community, culture, and heritage through its innovative use of both brick and glass block as one woven element that harnesses and celebrates both community and the organization.

CATEGORY

2022 GOLD

ARCHITECT FIRM

CANOPY

BRICK MANUFACTURER(S)

BUFFSTONE WIRECUT (PALMETTO), 470-479 LIGHT RANGE (BELDEN), SIENNA SMOOTH (SIOUX CITY BRICK), PRAIRIE SUNSET (SIOUX CITY BRICK), GRAND CANYON (SIOUX CITY BRICK), MEDIUM IRONSPOT #46 (ENDICOTT)

BRICK DISTRIBUTOR

BRICKWORKS SUPPLY CENTER

MASON CONTRACTOR

BLACKWOOD GROUP

PHOTOGRAPHER

SARAH CROWLEY

SUBMITTED BY

TONY PAPA



PAVING & LANDSCAPE

STEEPLECHASE ELEMENTARY

Walton, Kentucky

The client favors incorporating “learning courtyards” into their designs, providing students with natural environments that support their educational growth and development. Courtyards are one area of a schoolyard where outdoor educational experiences can occur. Activities that explore weather, seasons, clouds, soil, gardening, plants, and water can all happen in a courtyard setting. The clay brick pavers were a perfect material choice due to their high-quality, hard-wearing, slip-resistant surface that requires little to no maintenance. And the variety of colors; color played a significant role in the design; these were the ideal range of gray and black through-the-body colors that won’t fade.

We wanted to provide the perfect indoor and outdoor education environment. One of our design solutions focused on the solar system and the moon's phases. Since it's an elementary school with grades K through five, we felt children naturally gravitate towards learning about the solar system. The sun, moon, stars, and planets are fascinating to small children who see the stars twinkle in the night sky at night and older children who begin to ask more challenging questions.



Clay brick pavers were very important to the courtyard concept. The client challenged us to design the best courtyard in their school system for this new elementary school. When we started sketching the moon's phases, we knew we needed a material that would provide the aesthetic quality we were looking for but was also solid and durable. The clay brick pavers have an excellent formation and a uniform surface that ensures an incredible performance that will last the test of time.

CATEGORY

2022 BRONZE

ARCHITECT FIRM

ROBERT EHMENT HAYES & ASSOCIATES-
ARCHITECTS PLLC

BRICK MANUFACTURER(S)

THE BELDEN BRICK COMPANY

BRICK DISTRIBUTOR

DIVISION 4, INC

MASON CONTRACTOR

HUMAN NATURE INC

PHOTOGRAPHER

TODD BISS PRODUCTIONS

SUBMITTED BY

ERIC ZELIS



RESIDENTIAL: SINGLE-FAMILY

FILIGREE HOUSE

Philadelphia, Pennsylvania

On a prominent street in Philadelphia's Graduate Hospital neighborhood, a new 5,000sf home sits on a double wide infill lot. In order to create a veiled sense of privacy for the owner and visual interest on the street, a carefully crafted, 4-layer brick screen façade system with a curved steel support frame was developed. Behind the façade, material finishes include a freestanding helical steel and wood stair, bringing vertical movement to the dynamic two-story façade.

Through the use of a dramatic brick screen, that allowed light into spaces while also using curved geometric cuts in the screen, framed views were created to the neighborhood beyond. As we developed concepts, using brick was always our primary objective. Not only does it perfectly reflect the fabric of the neighborhood, it is the perfect module to choreograph a delicate dance between transparent and opaque. In addition to that, it represents a relatable material that invites wonder when used in such playful ways. By using brick, a staple of the row house vernacular in Philadelphia, the design respected the existing fabric while also challenging the surrounding context. The resultant effect is a home that is both visually engaging but also fits into the neighborhood. It is both contemporary and contextual. The interior of the home is anchored by a large metal curved stair from the first floor to the second, that is visible through the framed views of the screen, while allowing views into



and through the first floor. Custom kitchen and millwork provide touches of craft that support the family's urban lifestyle. The effect on the neighborhood is transformative throughout the day. The continuous play of natural light along the screen, allows the façade to continuously transform. While at night the interior glow of the house reverses the screen's presence of one that frames the house and the interior spaces. From the client's perspective, brick is an important material that represented longevity and permanence. As designers, the use of brick represented yet another opportunity to celebrate a common, timeless and accessible material as the basis for true modern design.

CATEGORY

2021 SILVER

ARCHITECT FIRM

MOTO DESIGNSHOP

BRICK MANUFACTURER(S)

MERIDIAN/GENERAL SHALE

BRICK DISTRIBUTOR

DIENER

MASON CONTRACTOR

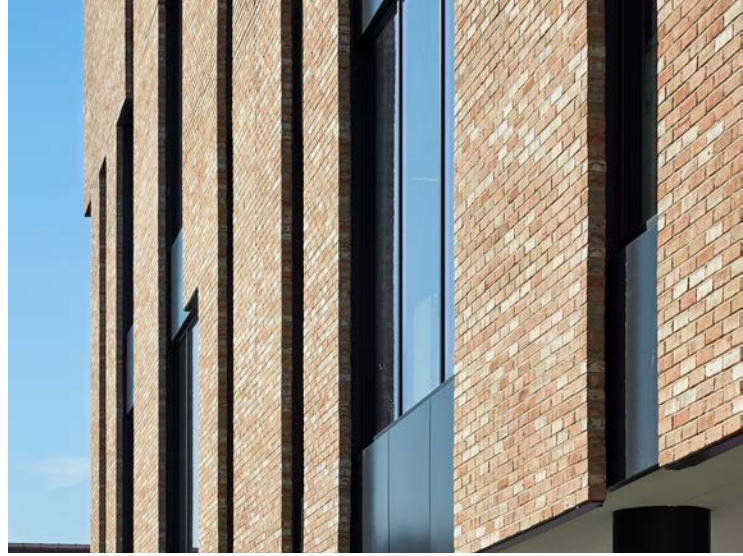
MASON D&G MASONRY

PHOTOGRAPHER

HALKIN MASON PHOTOGRAPHY

SUBMITTED BY

SAMANTHA HOLMES



EDUCATION: K-12

BERNARD ZELL ANSHE EMET DAY SCHOOL

Chicago, Illinois

At Bernard Zell Anshe Emet Day School (BZAEDS), children see and feel their culture, community and history expressed in its masonry every day. The expansion establishes a new head and heart for an existing school that for decades lacked a dedicated entrance, community space, and identity of its own. The new building organizes an assemblage of existing dark masonry buildings, constructed over time and in a variety of styles, with a tall, singular glass and brick volume that floats above the ground floor. The familiar colors and proportions of masonry connects the addition to the other school buildings on campus, as well as to the ubiquitous Chicago common brick in the neighborhood.

This desire to create a masonry brick 'shawl' around the building is the driving strategy for the exterior design. The light-colored brick wraps the school just as the tallit (prayer shawl) helps one to create a sacred space for reflection, learning, prayer. The tzitzit (fringe) that ties in a knot in four of the corners on the Tellit reminds us to do mitzvot (acts of loving kindness). Each string in the fringes reminds us that we are unique in our own way and we are all intertwined and tied together.

After entering via gracious plaza, inviting loggia, and daylight-filled security vestibule, students and parents experience the 'heart' of the addition – a curved masonry and glass sacred space – the Makom

Rina or 'Place of Joy'. Each of the 12 exposed curved masonry walls represents one of the twelve original tribes of Israel and is a simple double-wythe brick wall from floor to ceiling. These header bricks, arranged as symbols of Judaism, form the structure of the wall, tying individual units into a cohesive whole. Where these headers tie the wall together, the interior head joints are raked open, so that participants can place prayers into the joints between the units, in an echo of the ancient western wall of Jerusalem. Everything in this space, from the lighting, to the custom doors, glazing, and built-in furniture, is designed to complement and highlight this masonry structure.

CATEGORY

2019 BEST IN CLASS

ARCHITECT FIRM

WHEELER KEARNS ARCHITECTS

BRICK MANUFACTURER(S)

BELDEN, SUMMIT

BRICK DISTRIBUTOR

BRICKS, INC

MASON CONTRACTOR

NOT SPECIFIED

PHOTOGRAPHER

STEVE HALL, HALL + MERRICK PHOTOGRAPHERS

SUBMITTED BY

BETH GARNEATA



RESIDENTIAL: MULTI-FAMILY

45 EAST 7TH

New York, New York

45 East 7th Street is a boutique condominium building located on the site of a deadly gas explosion that leveled three tenement buildings previously occupying the corner of 7th and 2nd Avenue. In response to this tragedy, MA wanted to design a contextually traditional building that also embodied timeless sensibilities—a refined but practical approach to luxury that places emphasis on solid and durable construction, sustainability, and advancements in technology.

Similar to traditional tenement buildings found throughout the neighborhood, 45 East 7th features a tripartite façade that consists of a base, middle, frieze, and cornice separated by stone banding courses. Following tradition, MA also decided to use different brickwork details for each portion of its façade.

The building's ground level is defined by brick piers in a single corbel pattern. The middle portion, spanning floors 2-6, utilizes a custom L-shaped brick in a modular pattern that results in a striking checkerboard motif.



This pattern is commonly found throughout the East Village/Lower East Side Historic District as a decorative element below windows or in banding courses, but here it covers most of the building's façade. A third brick pattern consisting of a double corbel comprises the frieze between the 6th and 7th floors.

45 East 7th's unconventional use of hand-laid brick creates an incredibly dynamic play of light and shadow that changes throughout the day, lending the bricks a multi-tonal quality.

CATEGORY
2021 SILVER

ARCHITECT FIRM
MORRIS ADJMI ARCHITECTS

BRICK MANUFACTURER(S)
GLEN-GERY

BRICK DISTRIBUTOR
NOT SPECIFIED

MASON CONTRACTOR
NOT SPECIFIED

PHOTOGRAPHER
JIMI BILLINGSLEY

SUBMITTED BY
SAMIERA MUHAMMED